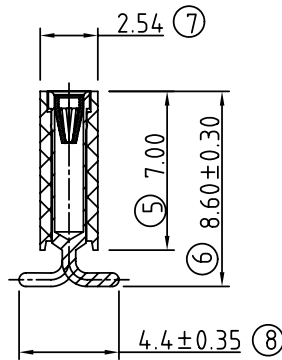
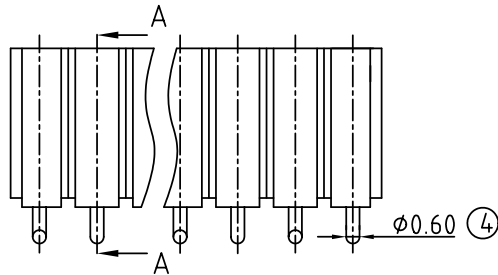
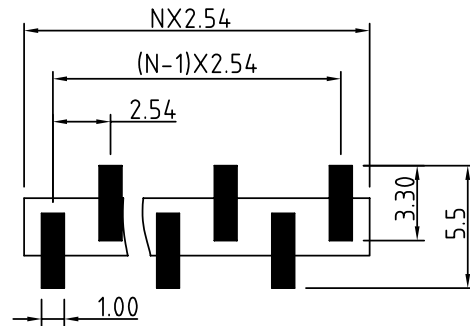


N=The number of contacts



SECTION A--A



P.C.B. LAYOUT

SIGN	DATE	DESCRIPTION	APPROVER
△			
THIS IS CAD DRAWING, DO NOT REVISE MANUALLY!!!			

RD Series

Technical Data

Material:

Pin (outer sleeve) : Brass,machined, CuZn38Pb2  
Clip(contact 6finger): Beryllium copper,heat treated or PHBZ  
Plating(outer sleeve) : Tin plated : 2um/80u"nickel,5um/200u"Tin  
Gold plated: 2um/80u"nickel,Full gold  
Plating(contact) : 2um/80 u"nickel,gold or Tin plating  
Insulator body(housing) : PPS. UL 94V-0

Electrical

Current rating : 3 Amps/contact max.  
Current resistance : 4m /contact.  
Insulation resistance : 10000M at 500VAC  
Rated voltage : 100V<sub>RMS</sub>/150V<sub>DC</sub>

Mechanical

Operating temperature : Gold plated: -55°C to +125°C  
(Continuous) Tin plated: -40°C to +105°C  
Average insertion force: <140g  
With steel pin of Ø 0.66mm or SQ 0.64mm  
Average withdrawal force: >25g  
With steel pin of Ø 0.66mm or SQ 0.64mm  
Mechanical life: min.200

Environmental data

Solderability (IEC 60068-2-20. Ta) :235°C, 2s  
Resistance to soldering heat (IEC 60068-2-20. Tb) :  
-SMD mount components :280°C, 10s

RD - XX 0 0 X 0 XXXXG

No.of contacts :01~40

pin plated: Code	Clip plated	Pin plated	0000	ROHS
0	Gold Flash	Tin 200u"	18H0	Clip 5218 HY ROHS
1	Gold 10u"	Tin 200u"		
2	Gold 30u"	Tin 200u"		
3	Tin 200u"	Tin 200u"		
4	Gold flash	Gold flash		
5	Gold 10u"	Gold flash		
6	Gold 30u"	Gold flash		

**ANYTEK**

**CUSTOMER COPY**

ALL RIGHTS RESERVED. REPRODUCTION OR ISSUE TO THIRD PARTIES IN ANY FORM WHATEVER IS NOT PERMITTED WITHOUT WRITTEN AUTHORITY FROM THE PROPRIETOR. PROPERTY OF ANYTEK TECHNOLOGY CO., LTD

TITLE	RD-Single row Series(10.3mmL Pin)							
PART NO.	RDXX00X0XXXXG			DWG NO.	8RD0002			
APPROVED	CHECKED	DESIGNED	DRAWN	CUST NO.			Tolerance	
		Joanna 2005.08.01	Joanna 2005.08.01			UNIT: mm	X. ±0.50	
						SCALE: NONE	X.X ±0.30	
				SHEET: 01/01		REV.: C	X.XX ±0.10	
								X* ±1*